

Office/Flex Space For Lease

Oxmoor Commons

209, 225, 234, 237 & 240 Oxmoor Circle
Homewood, Alabama

For more information
please contact:

Nick Nesmith, CCIM
Engel Realty Company
Phone: (205) 939-8237
Fax: (205) 939-6817
nnesmith@engelrealty.com

www.LeaseBham.com

Available Space

Up to 11,150 sf contiguous
Divisible & Customizable

Floorplans on Website

Dock-High & Grade-Level
Truck Loading

Possession

Immediate possession on
most suites

Term

Negotiable

Location

Located off of Interstate 65

Within minutes of Interstate
20/59 & Interstate 459

Convenient to Red Mountain
Expressway (Highway 31),
Lakeshore Parkway

Easy access to the Birmingham
Central Business District

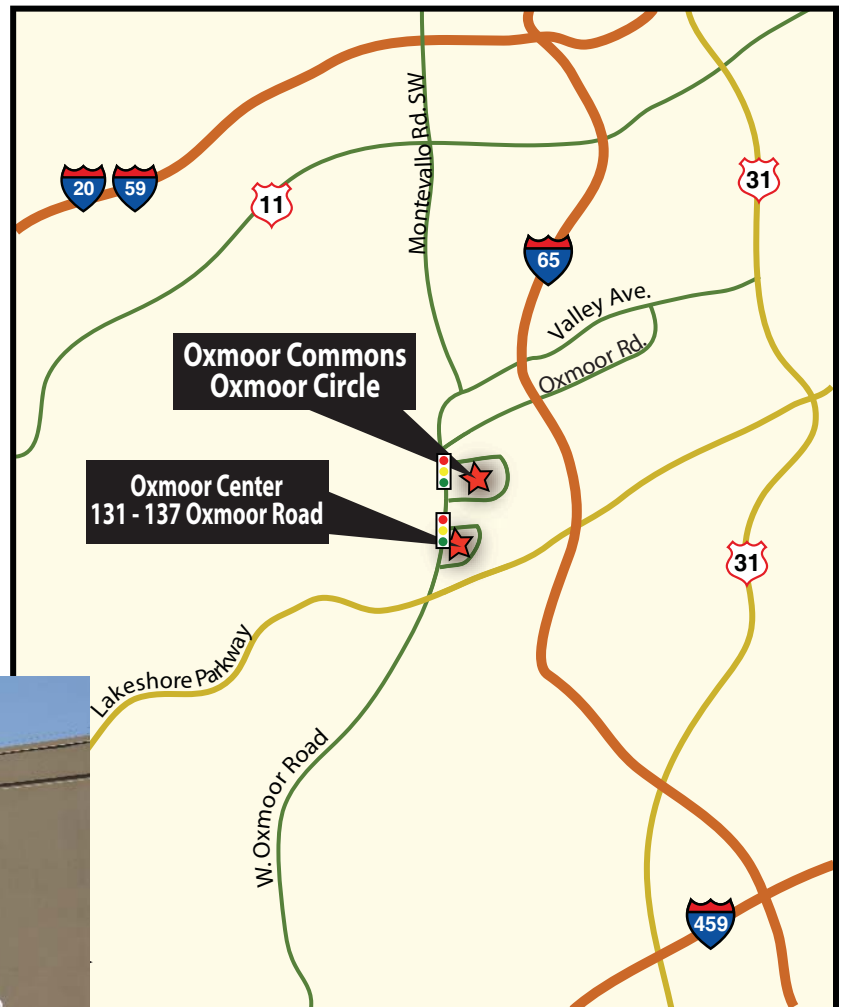




www.LeaseBham.com

Oxmoor Commons

209, 225, 234, 237 & 240
Oxmoor Circle
Homewood, Alabama



Oxmoor Commons Floorplans

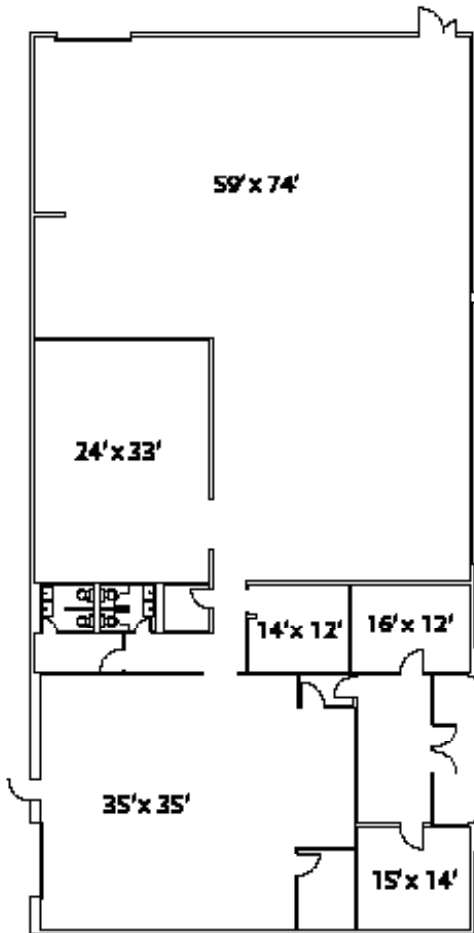


For more information
please contact:

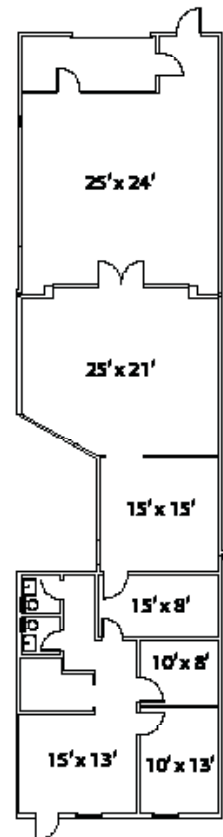
Nick Nesmith, CCIM
Engel Realty Company
Phone: (205) 939-8237
Fax: (205) 939-6817
nnesmith@engelrealty.com

www.LeaseBham.com

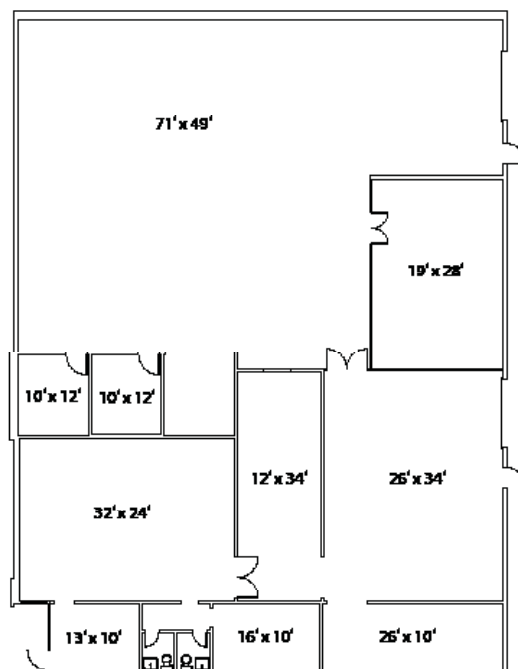
234-211
7,350 sf



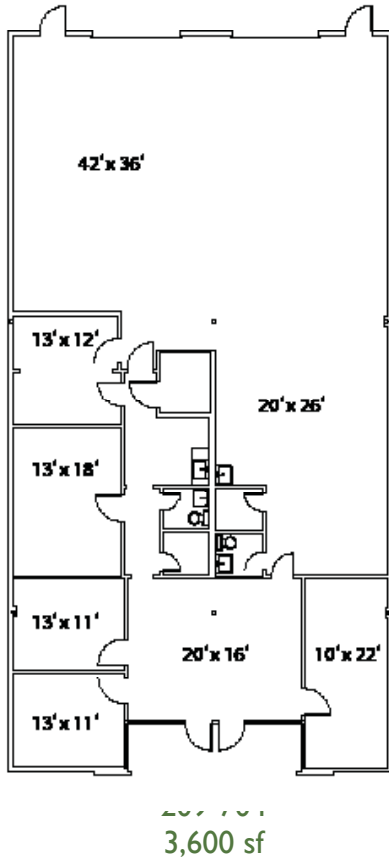
209-70
2,374 s



240-111
6,800 sf



Oxmoor Commons Floorplans



For more information
please contact:

Nick Nesmith, CCIM
Engel Realty Company
Phone: (205) 939-8237
Fax: (205) 939-6817
nnesmith@engelrealty.com

www.LeaseBham.com

