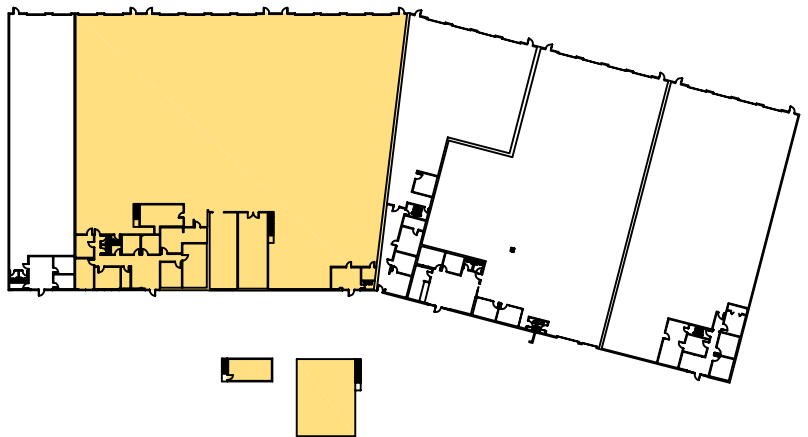
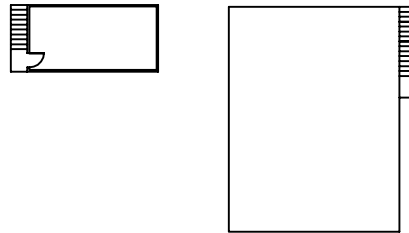
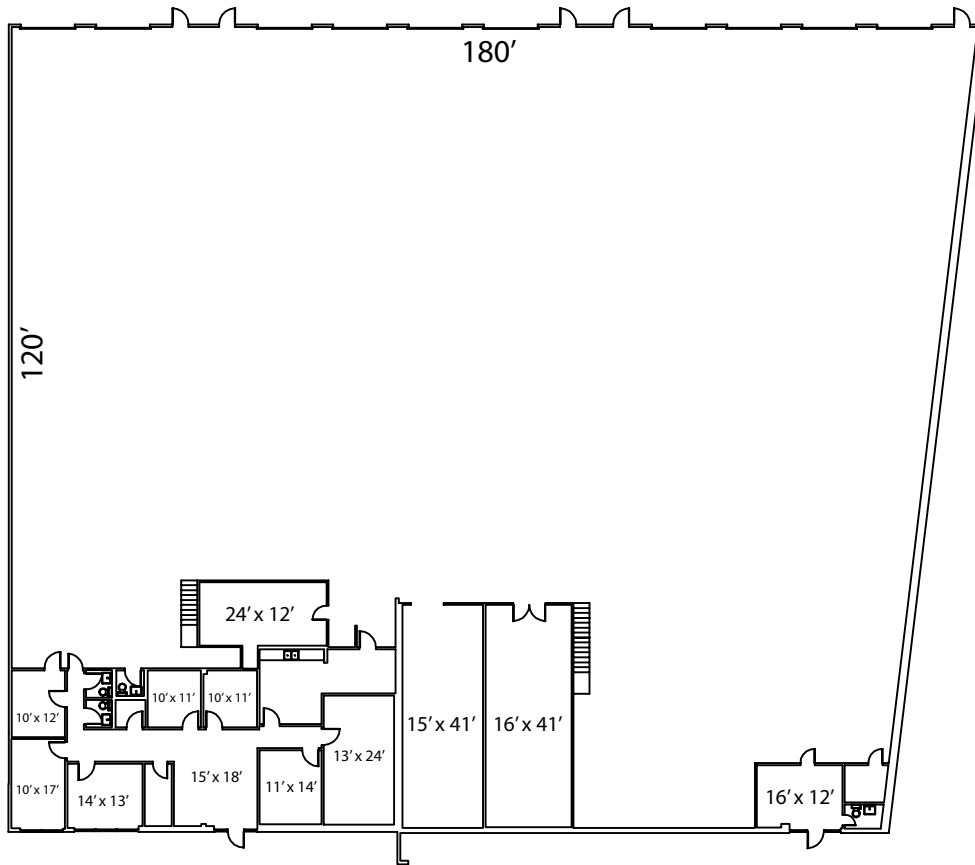


27,500 sf



For Leasing Information Contact:

John Clisby
 Engel Realty
 951 18th Street South, Suite 200
 Birmingham, AL 35205
 Phone: (205) 939-8218
 Fax: (205) 939-6817

FLOOR PLAN



Disclaimer: The above dimensions are not to scale. The available space shown is believed to be correct but is subject to change.



SUITE 2708
 2700 REPUBLIC
 2700 REPUBLIC BLVD.
 BIRMINGHAM, AL. 35214



Prepared by:
 American Building Calculations
 2209 Collier Parkway, Suite 118
 Land O Lakes, FL. 34639
 Phone: 813.600.5472
<http://www.abcalc.biz>