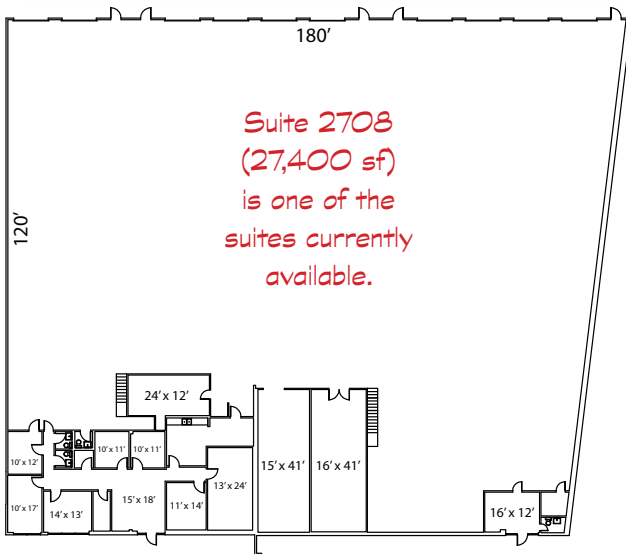


# For Lease

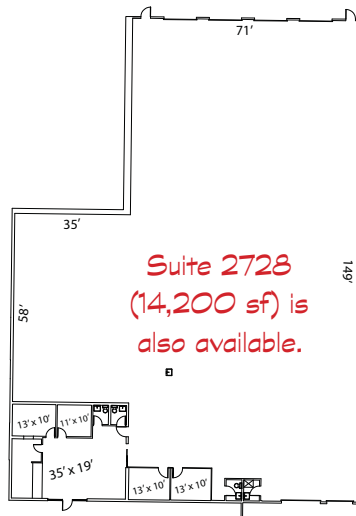
## Office & Warehouse

### 2700 Republic



#### Features:

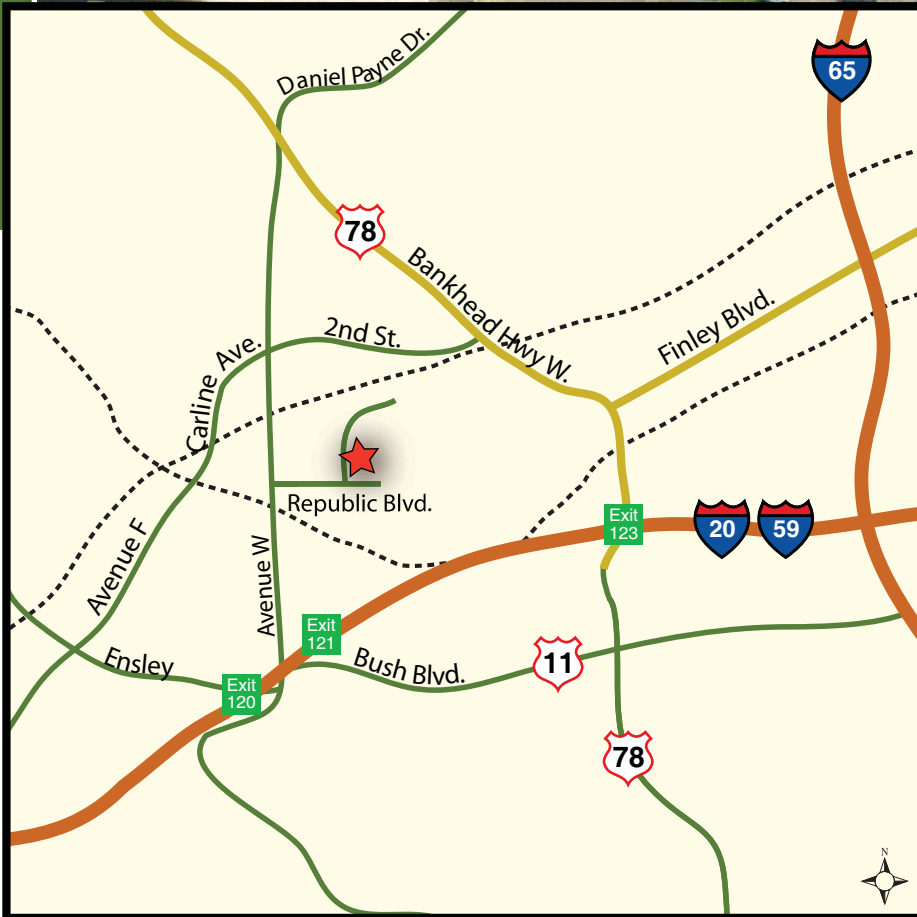
- Centrally Located
- Bulk Warehouse Space
- Dock-High & Grade-Level Truck Loading
- Move-In Ready & Custom Suites Available
- 18 ft. Clear Height Ceilings
- Zoned M-2 - allowing for a variety of uses



#### Leasing Information

John Clisby  
Engel Realty  
Phone: (205) 939-8218  
Fax: (205) 939-6817  
jclisby@engelrealty.com





## Location

- Northwest of Birmingham Central Business District
- Convenient to Interstate 20, Interstate 59 & Interstate 65
- Industrial Neighborhood

## Leasing Information

John Clisby  
 Engel Realty  
 Phone: (205) 939-8218  
 Fax: (205) 939-6817  
[jclisby@engelrealty.com](mailto:jclisby@engelrealty.com)

Call for our  
 Current Specials!

